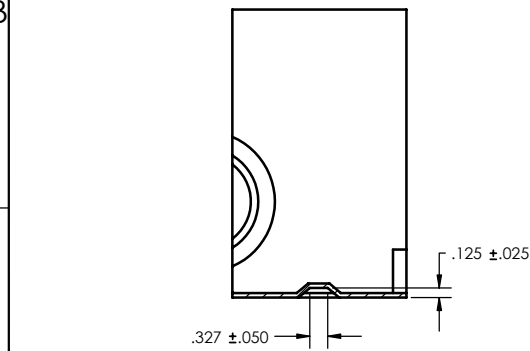
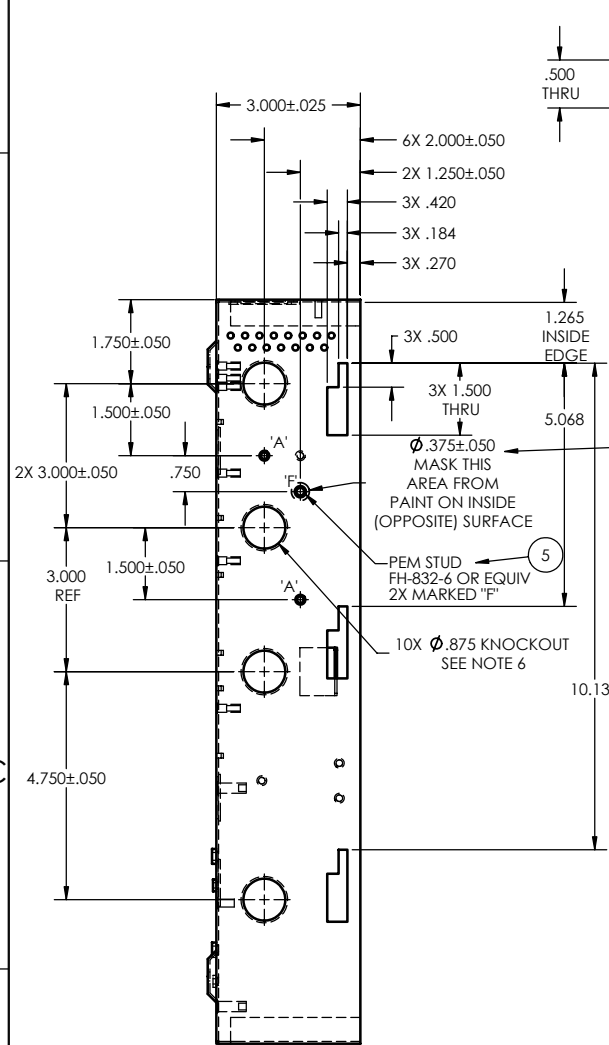
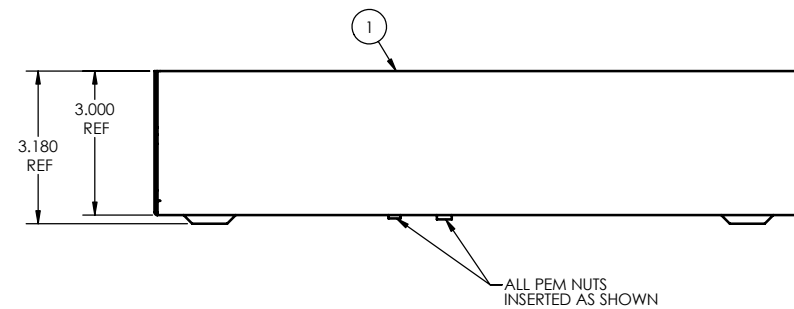
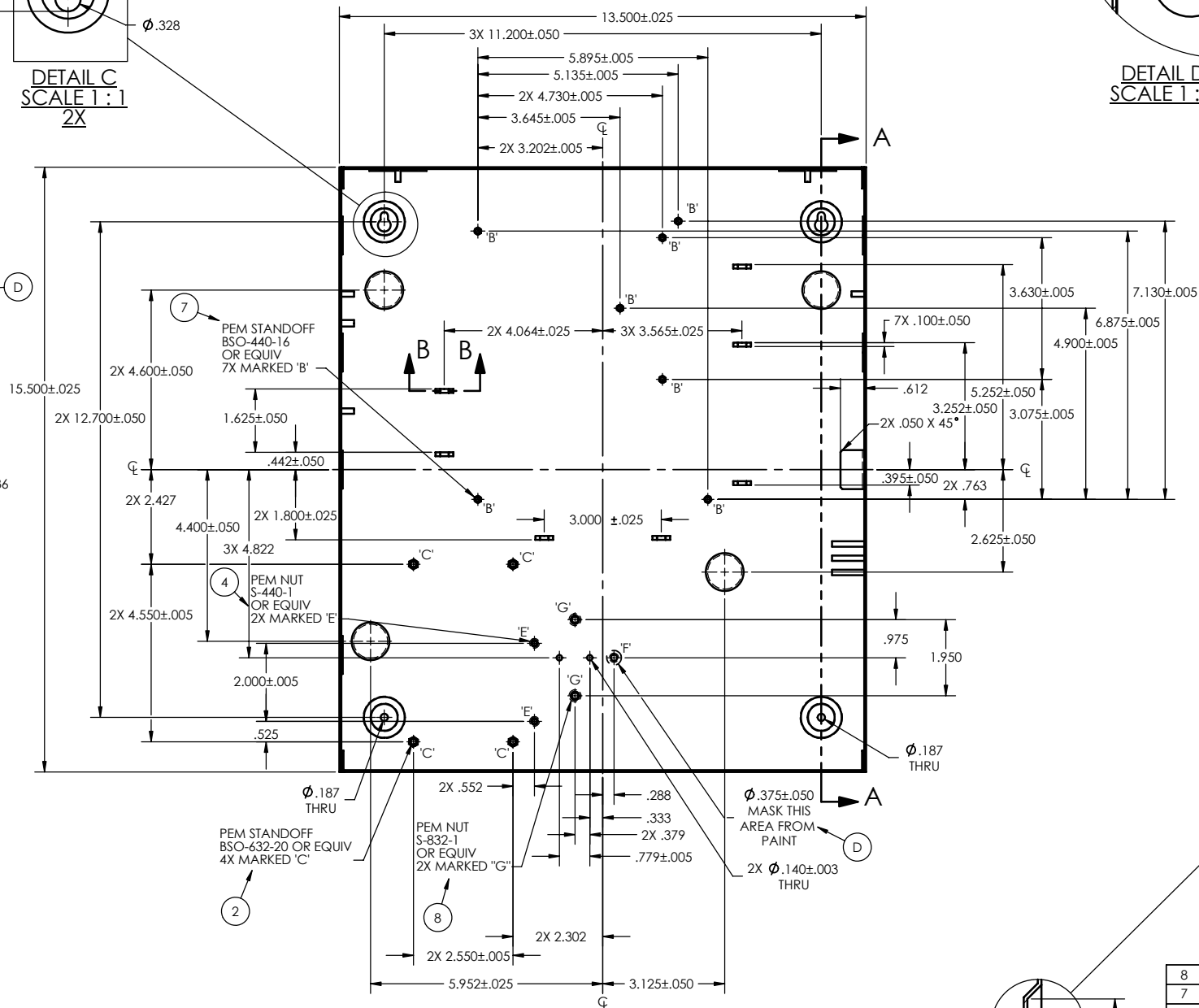
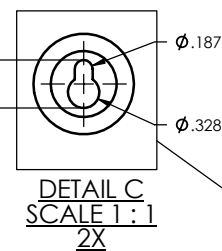


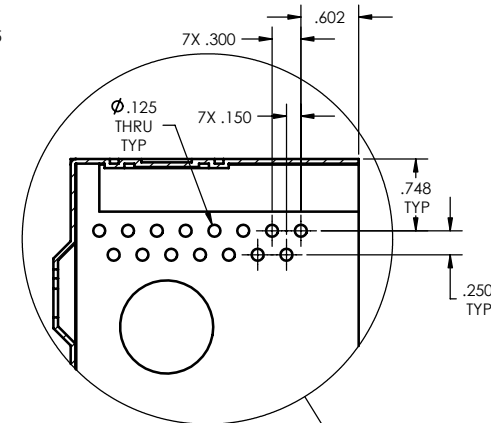
1. MATERIAL: 18 GAGE (.048") THICK, CRS
2. FINISH: PAINT COLOR RAL 9002, 89/11010 POWDER COAT, FINE TEXTURE (NAPCO PT140)
3. REMOVE ALL BURRS & SHARP EDGES
4. INTERNAL EDGES USE MINIMUM BEND RADI
5. PART TO BE FLAT & FREE OF WARP & TWIST WITHIN .0625" END TO END
6. FORCE TO COMPLETELY DETACH KNOCKOUTS TO BE 10 POUNDS ±2 POUNDS. KNOCKOUTS SHOULD HAVE 2 SECONDS POINTS 18" APART. KNOCKOUT SECURING POINTS TO BE 2-3 TIMES THE TENSILE STRENGTH. KNOCKOUTS TO BE STAMPED .010" PAST MATERIAL THICKNESS & DAYLIGHT MUST BE SEEN BETWEEN SECURING POINTS BEFORE PAINT
7. ITEMS 2 - 8 (STANDOFFS, STUDS & NUTS) TO BE MASKED FROM PAINT. ENTIRE THREAD OF STUD TO BE MASKED FROM PAINT. TOP OF ALL STANDOFFS TO BE MASKED FROM PAINT. SIDE MASK OF STANDOFFS IS OPTIONAL
8. SOME HIDDEN LINES REMOVED FOR CLARITY



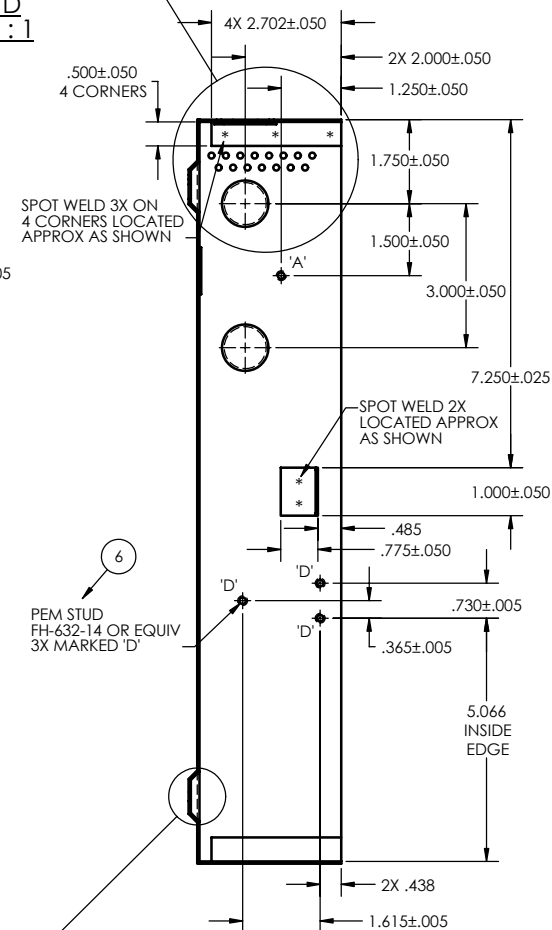
SECTION B-B  
SCALE 1 : 1  
7X



DETAIL B  
SCALE 1 : 1  
4X




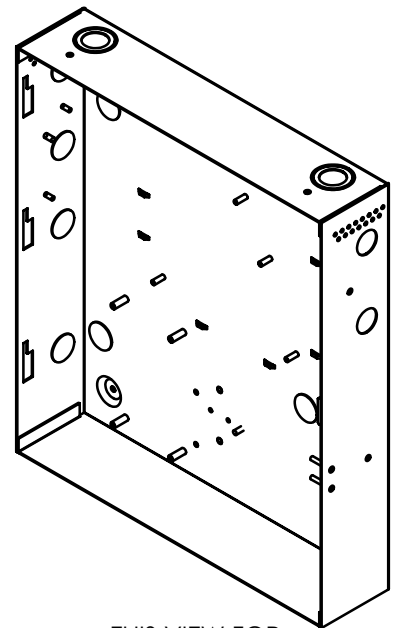
DETAIL D  
SCALE 1 : 1



SECTION A-A

8	PEM S-832-1-ZI	HW1228	NUT, SELF CLINCHING 8-32, ZINC PLATED MARKED "G"	2
7	PEM B50-440-16-ZI	HW1224	STANDOFF, BLIND SELF CLINCHING, 4-40 X .500" LONG, ZINC PLATED MARKED 'B'	7
6	PEM FH-632-14-ZI	HW1229	STUD, SELF CLINCHING, 6-32 X .875" LONG, ZINC PLATED MARKED 'D'	3
5	PEM FH-832-6-ZI	HW1222	STUD, SELF CLINCHING, 8-32 X .375" LONG, ZINC PLATED MARKED 'F'	2
4	PEM S-440-1-ZI	HW1179	NUT, SELF CLINCHING, 4-40, ZINC PLATED MARKED 'E'	2
3	PEM FH-632-6-ZI	HW1160	STUD, SELF CLINCHING, 6-32 X .375" LONG, ZINC PLATED MARKED 'A'	5
2	PEM B50-632-20-ZI	HW1223	STANDOFF, BLIND SELF CLINCHING, 6-32 X .625" LONG, ZINC PLATED MARKED 'C'	4
1	N/A	HW1194	BASE	1
ITEM	VENDOR P/N OR EQUIV	NAPCO P/N	DESCRIPTION	QTY

APPROVALS		DATE		 <b>NAPCO SECURITY SYSTEMS INC.</b> <small>DIVISION OF NAPCO SECURITY GROUP, AMITYVILLE, N.Y.</small>	
DRAWN: RJ		2/4/04		<small>THIS DRAWING CONTAINS CONFIDENTIAL INFORMATION WHICH SHALL NOT BE DISCLOSED WITHOUT THE PRIOR WRITTEN CONSENT OF NAPCO SECURITY GROUP</small>	
CHECKED:		TITLE		<b>BASE, HOUSING - SUPER 2</b>	
APPROVED		<b>D</b> PART NO. <b>HW1194</b>		DRAWING NO. <b>05812</b>	
UNLESS OTHERWISE SPECIFIED DIMENSIONS ARE IN INCHES.				REV: D	
TOLERANCES: FRACTIONS $\pm$ X/X    DECIMALS XXX $\pm$ .010    ANGLES $\pm$ 1°				SCALE: 1/2"	
				SHEET 1 OF 1	



THIS VIEW FOR  
REFERENCE ONLY